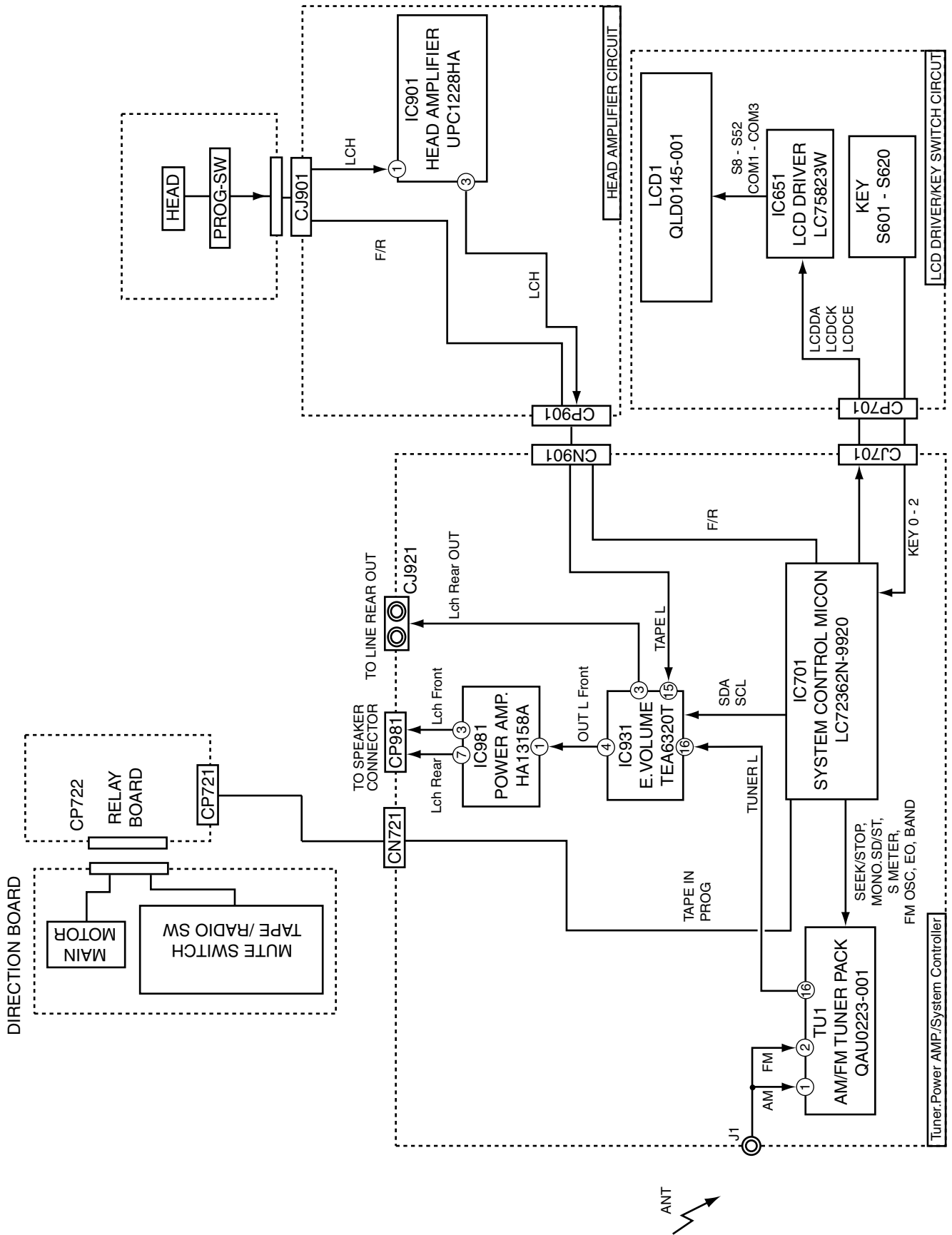


Block diagram



< M E M O >

Standard schematic diagrams

Receiver & operation switch circuit section

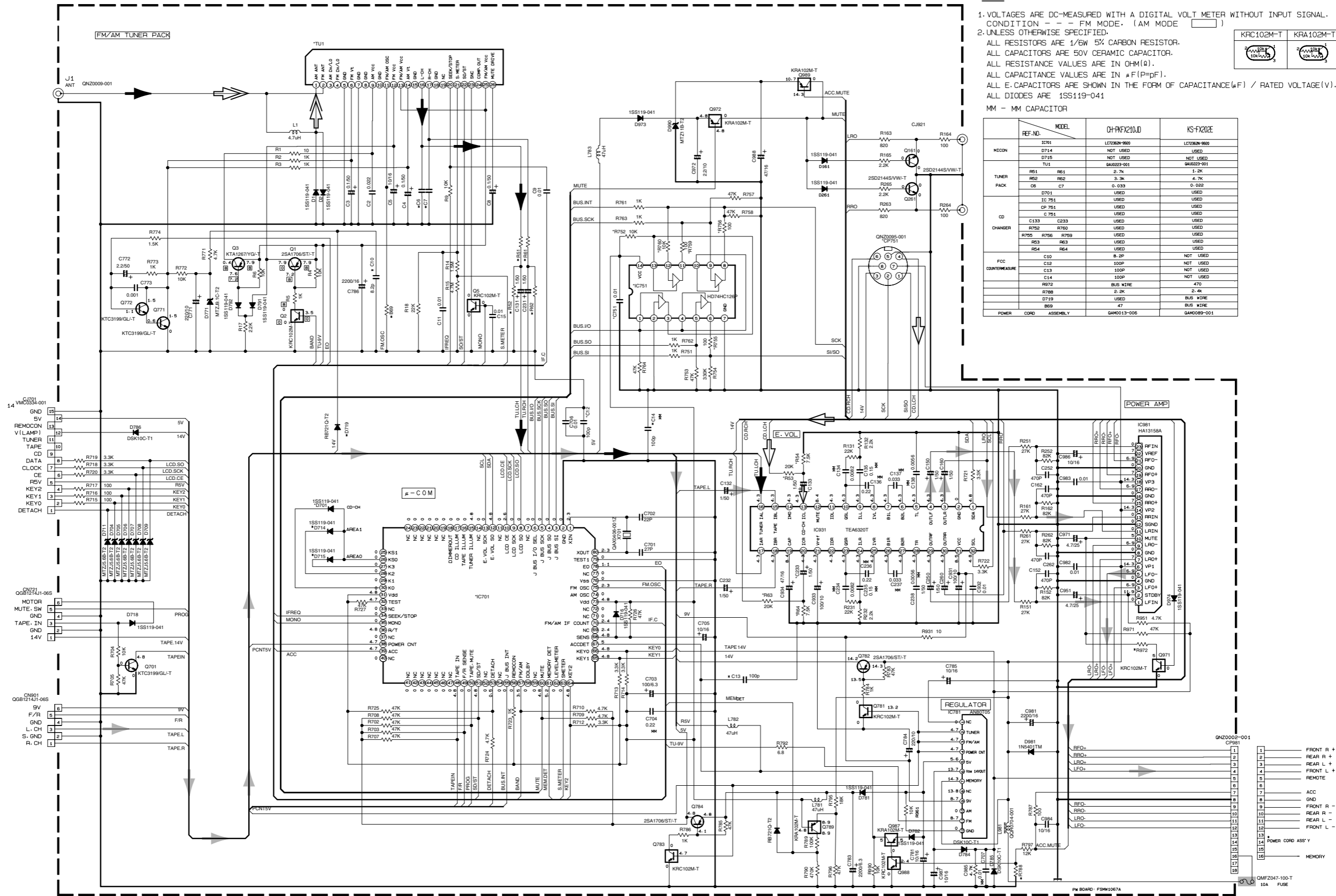
5

4

3

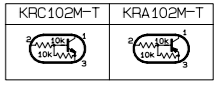
2

1



NOTES

1. VOLTAGES ARE DC-MEASURED WITH A DIGITAL VOLT METER WITHOUT INPUT SIGNAL. CONDITION - - - FM MODE. (AM MODE)
2. UNLESS OTHERWISE SPECIFIED:
 ALL RESISTORS ARE 1/6W 5% CARBON RESISTOR.
 ALL CAPACITORS ARE 50V CERAMIC CAPACITOR.
 ALL RESISTANCE VALUES ARE IN OHM(Ω).
 ALL CAPACITANCE VALUES ARE IN μF(P=PF).
 ALL E. CAPACITORS ARE SHOWN IN THE FORM OF CAPACITANCE(μF) / RATED VOLTAGE(V).
 ALL DIODES ARE 1SS119-041



REF. NO.	MODEL	CH-FX210J	KS-FX202E
MICDN	IC701	LC7262H-980	LC7262H-980
	D714	NOT USED	USED
	D715	NOT USED	NOT USED
TUNER PACK	TU1	GMK223-001	GMK223-001
	R51	R51	1.2K
	R52	R52	4.7K
	C6	C7	0.033
	D701	C7	0.033
	IC751	USED	USED
	CP751	USED	USED
CD CHANGER	C133	C233	USED
	R752	R760	USED
	R755	R759	USED
	R53	R63	USED
	R54	R64	USED
FCC COUNTERMEASURE	C10	8.2P	NOT USED
	C12	100P	NOT USED
	C13	100P	NOT USED
	C14	100P	NOT USED
	R972	BUS WIRE	470
	R788	2.2K	2.4K
	D719	USED	BUS WIRE
	B69	47	BUS WIRE
POWER CORD ASSEMBLY		GMK013-C06	GMK039P-C01

FM radio signal
 CD signal
 AM radio signal
 Tape PB/Main signal
 Parts are safety assurance parts. When replacing those parts make sure to use the specified one.

Head amplifier circuit section

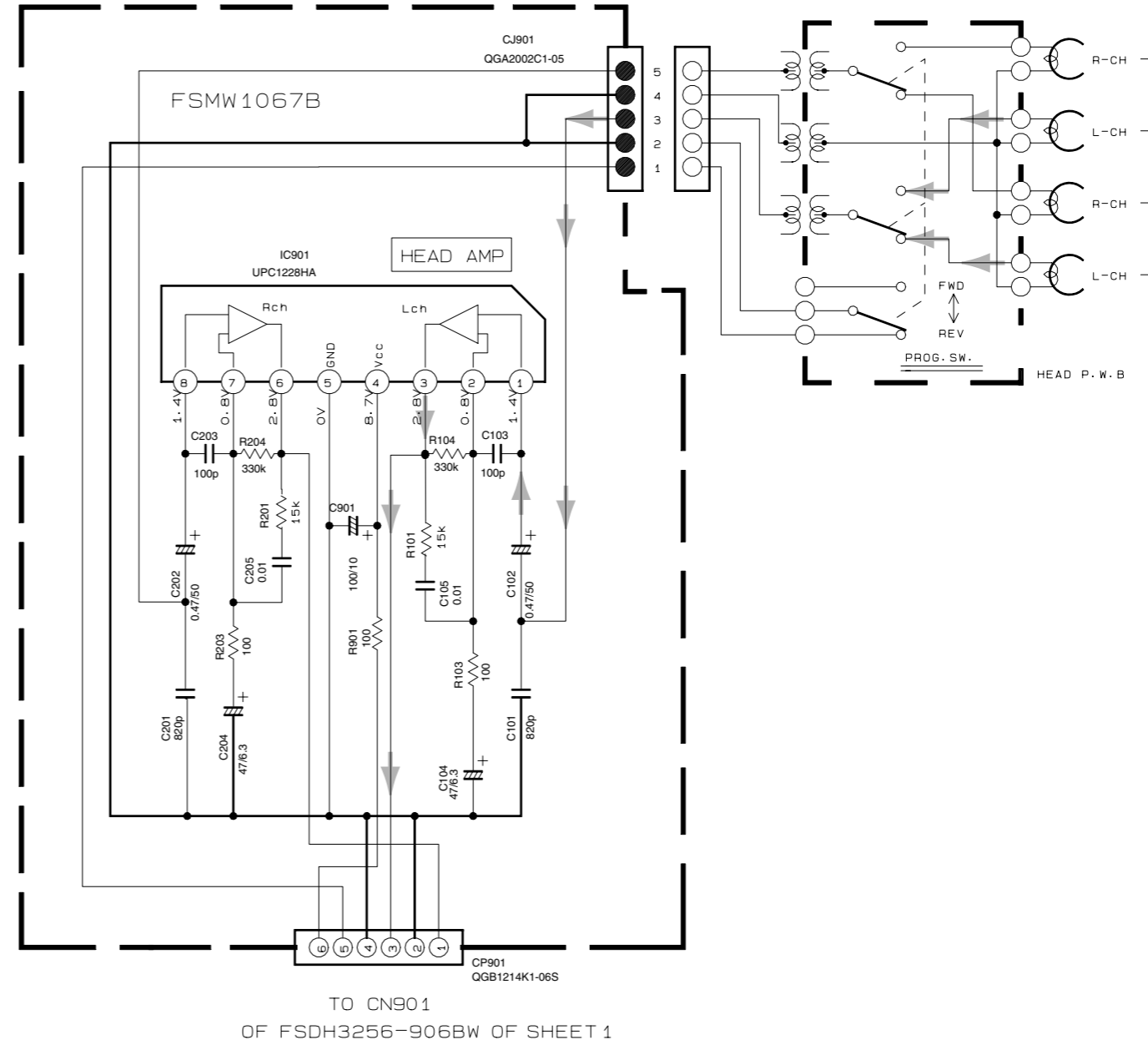
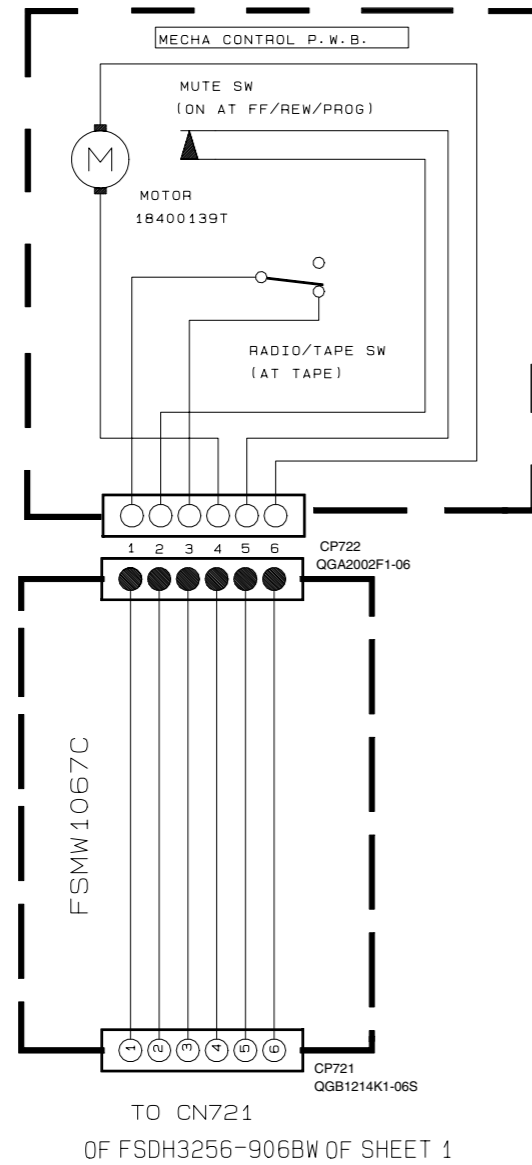
5

4

3

2

1



➔ Tape PB/Main signal

A

B

C

2-4

D

E

F

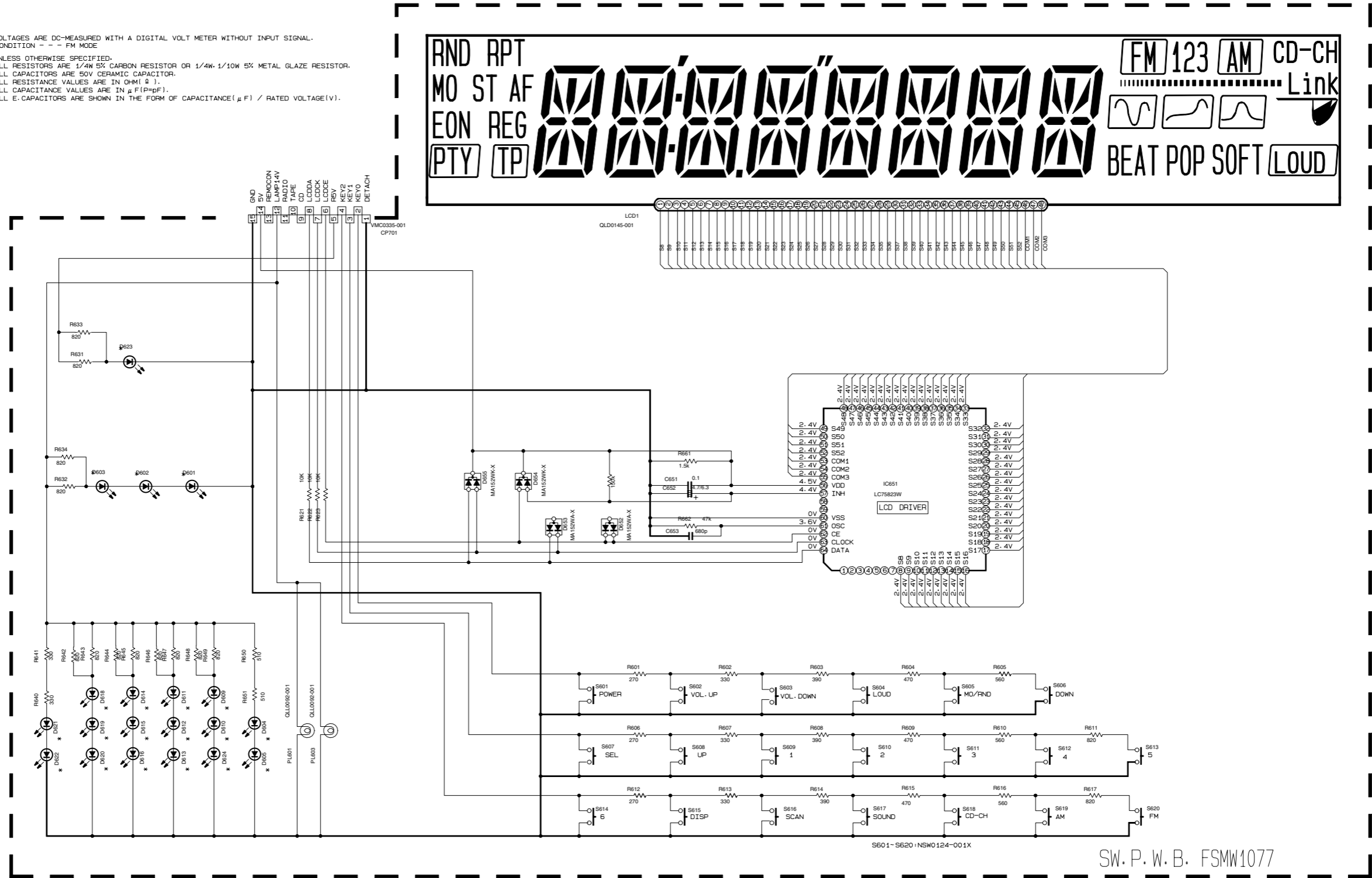
G

H

■ Display / switch circuit section

NOTES

- VOLTAGES ARE DC-MEASURED WITH A DIGITAL VOLT METER WITHOUT INPUT SIGNAL.
CONDITION - * - FM MODE
- UNLESS OTHERWISE SPECIFIED:
ALL RESISTORS ARE 1/4W 5% CARBON RESISTOR OR 1/4W-1/10W 5% METAL GLAZE RESISTOR.
ALL CAPACITORS ARE 50V CERAMIC CAPACITOR.
ALL RESISTANCE VALUES ARE IN OHM(Ω).
ALL CAPACITANCE VALUES ARE IN μF(P=PF).
ALL E-CAPACITORS ARE SHOWN IN THE FORM OF CAPACITANCE(μF) / RATED VOLTAGE(V).



SW. P. W. B. FSMW1077

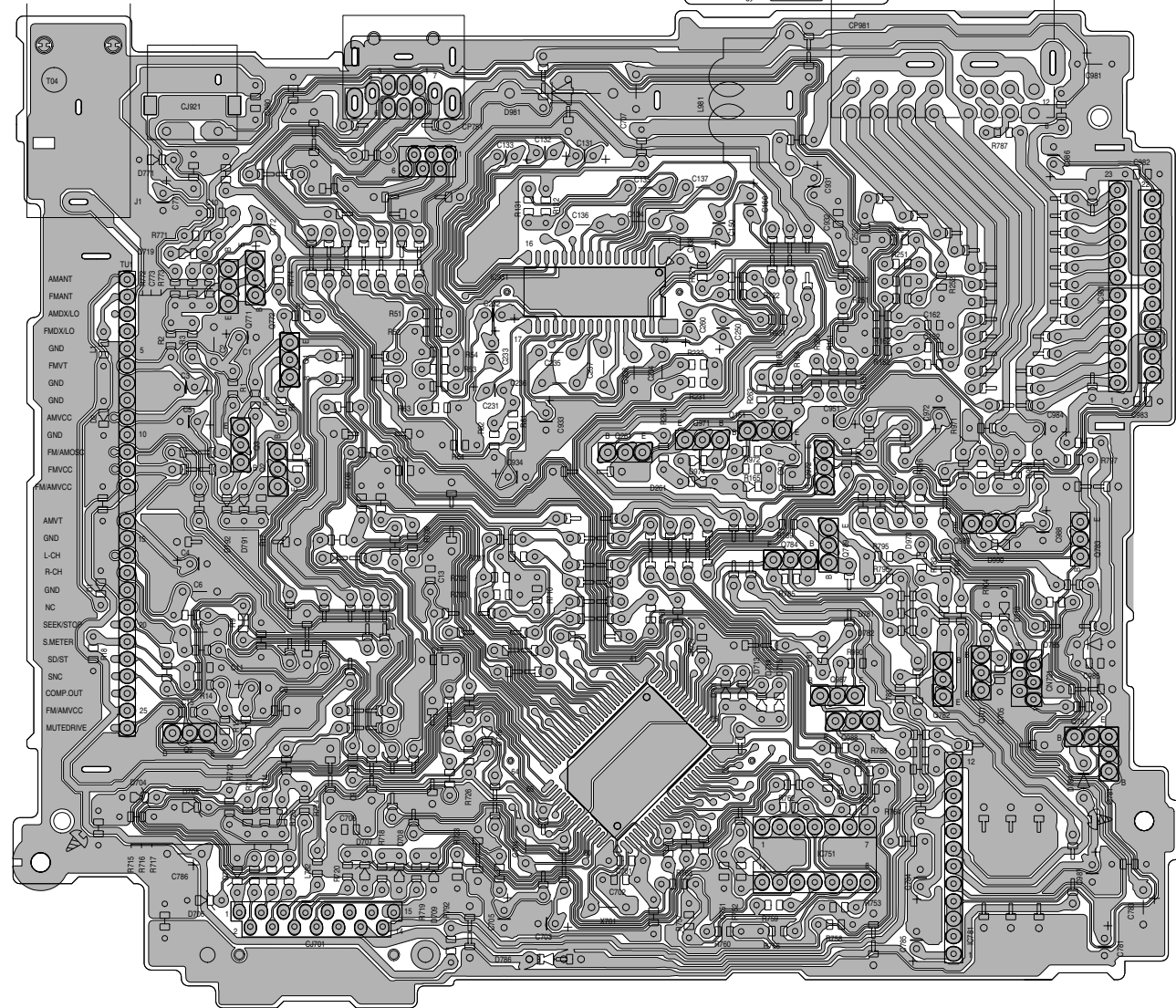
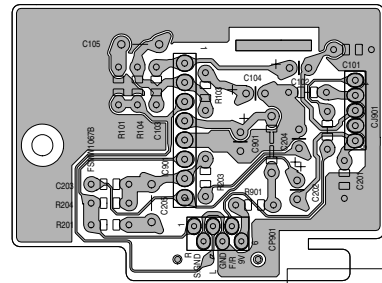
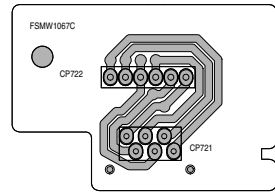
REF. NO.	VERSION	CH-PKFX210JD	KS-FX202E
D601 - D622 / D624		SML-310VT/JK/-X	SML-310VT/JK/-X
D613		LNJ308G81/1-3/X	LNJ308G81/1-3/X
D623		SML-310LT/MN/-X	SML-310LT/MN/-X

5
4
3
2
1

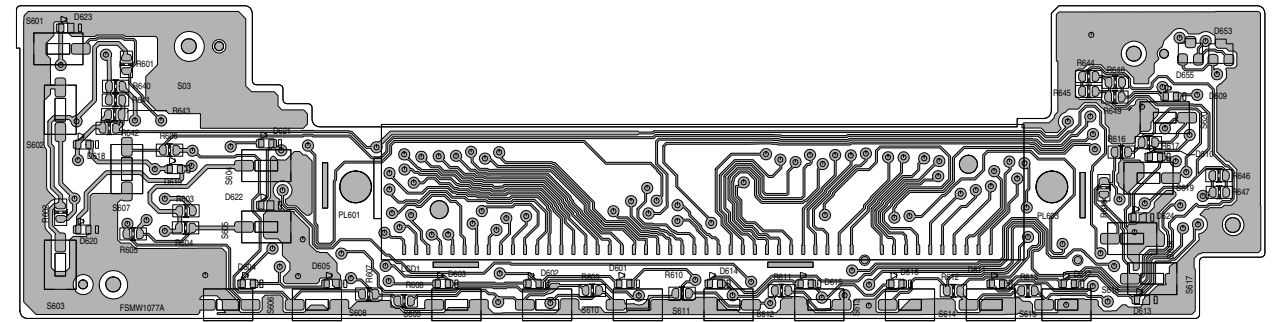
A | B | C | D | E | F | G | 2-5

Printed circuit boards

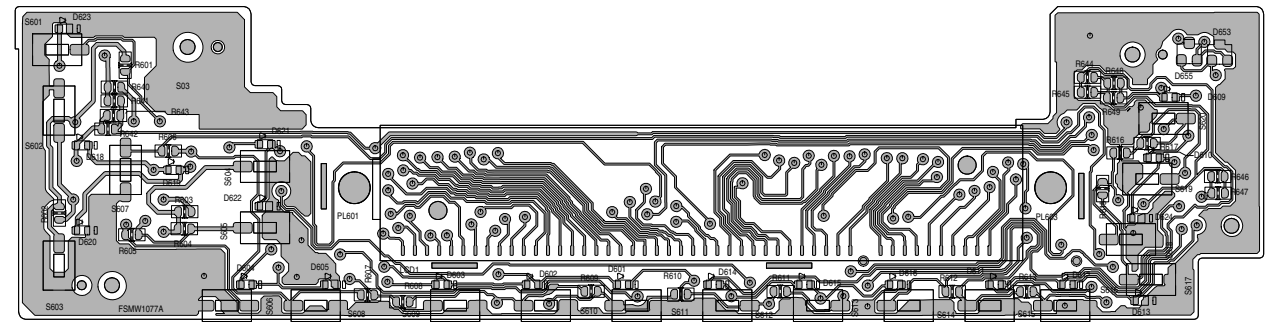
■ Main board



■ Front board(Forward side)



■ Front board(Reverse side)



5
4
3
2
1

A | B | C | 2-6 | D | E | F | G | H